



university of
groningen

faculty of behavioural
and social sciences

clinical & developmental
neuropsychology,
traffic psychology



Date 28.09.2010 | 1

Adaptive Task Support Based on Dynamic Human State Estimation

Arjan Stuiver

a.stuiver@rug.nl

Chris Dijksterhuis

c.dijksterhuis@rug.nl

Research group:

www.TrafficPsychologyGroningen.info

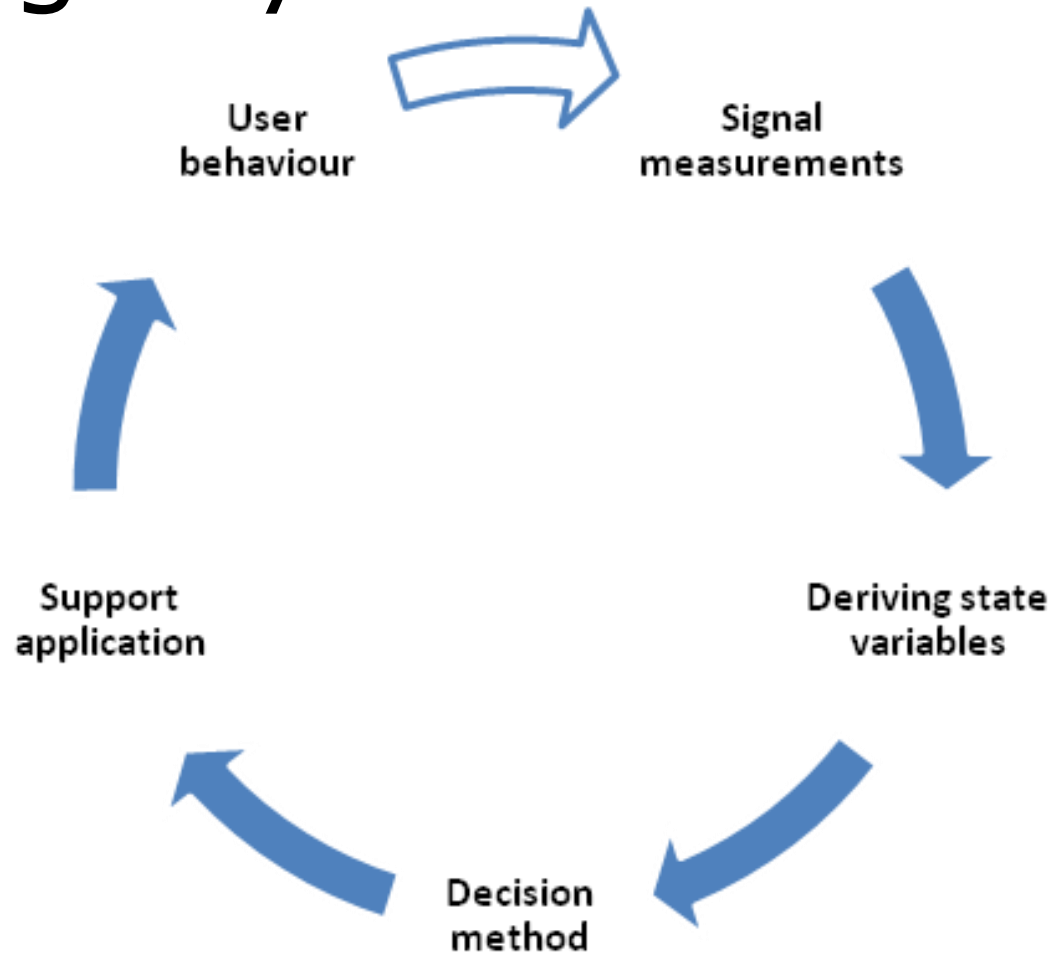


Adaptive systems

- > Adapt to operator's needs
- > Human centered
- > Design Cycle



Design cycle





Design Issues

- > Individual differences
- > Multiple sources
- > (Closing the feedback loop)



Design Issues: Individual differences

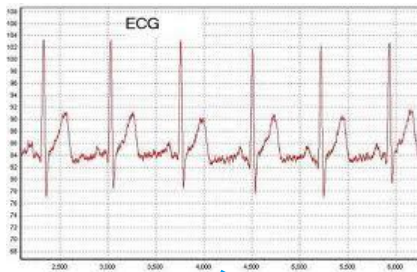
Example from REFLECT:

Measuring HR to delay phone call

Research Ferrari



ECG signal



Threshold?

Car phone

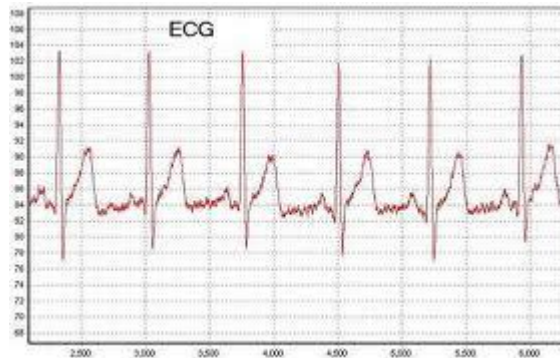


How to deal with these
 differences?



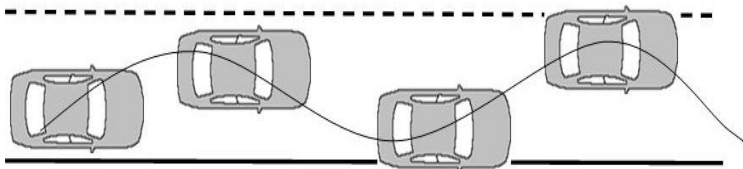
Design Issues: Multiple sources

ECG



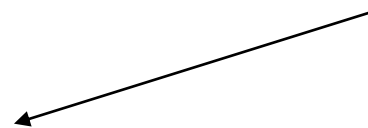
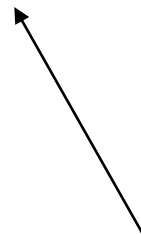
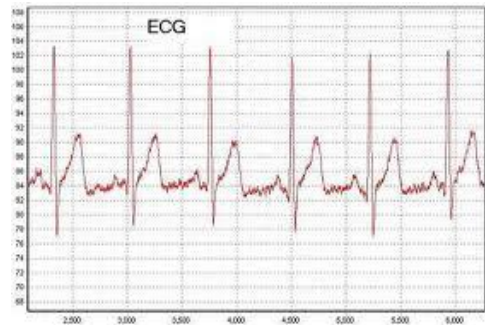
Activation of support

Swerving behaviour





Design Issues: Closing the loop





university of
 groningen

faculty of behavioural
 and social sciences

clinical & developmental
 neuropsychology,
 traffic psychology



Date 28.09.2010 | 8

Thank you for your attention

Arjan Stuiver

a.stuiver@rug.nl

Chris Dijksterhuis

c.dijksterhuis@rug.nl

Research group:

www.TrafficPsychologyGroningen.info